

THE PRECANCEL FORUM

Volume 71, No.4

April 2010

Whole No. 844

PERIODICALS

<u>Article</u>	<u>Page</u>	<u>Article</u>	<u>Page</u>	<u>Article</u>	<u>Page</u>
Editor's Soapbox	111	New State Editor for Pennsylvania	122	Get Published in <i>The Forum</i>	131
Official Announcement of Forum Subscription Fees	111	Courtland, New York	123	Warning: Bridge Closed	133
Background for Article on Jamestown	114	Club Scene	125	New Local Bar Precancel?	133
Jamestown, NC (Part 2)	114	APS Summer Seminars	125	Inquiring Minds Correction	134
Correction for Iowa Tippecanoe and a New Type Too	121	Recruit and Mentor a New Member	127	What Are Universal Numbers?	134
Secretary's Report	122	Get Scheduled in the Calendar of Events	131	'Local' Devices	134
				'Legible' Imprint	136

PERIODICALS
Postage Paid

PRECANCELS PURCHASED

I have established the reputation of paying fair, or even generous prices for estates, lots, collections and accumulations of precancels. I can pay better prices because I have acquired, through years of experience, the knowledge of how best to liquidate all types of precancels, not just the cream. I have found new homes for tens of millions of precancels in the past eight years. If the time has come to sell your precancel holdings or to line up your affairs, because no one in your family is interested in precancels, please consider me as the one to handle everything fairly and discreetly. I travel anywhere, and can provide impeccable references.

PRECANCELS SOLD

As stated above, I take pride in finding new homes for the precancels that I acquire. If you are interested in obtaining any variety of precancel, as single stamps, packets, mixtures or entire collections, be sure I know what you are looking for. If I don't have the specific item(s) at the moment, you can be assured that I will keep you in mind for when the right stuff comes along.

PHIL CAYFORD
BOX 497
DUBLIN, NH 03444
603-563-8021
npcayford@myfairpoint.net

844



As I begin to work on this issue, spring flowers are starting to bloom in this part of North Carolina. Perhaps the unusual weather of this past winter is finally behind us. The boys of summer are in spring training. We can begin to think about getting outdoors and working in our gardens or all the other outdoor activities that mean, for you, summer is just around the corner. This also means that our annual convention in Burlington, Vermont, can't be far behind!

We all owe a tremendous debt to Arnold Selengut and Mike gutman for their ongoing efforts to update several precancel catalogs. We have a month to catch our collective breaths so we can process all of their recent information. Never fear, for those of you who need a fix of catalog updates, Arnold plans to have another *Town and Type* update ready for next month's issue.

In the meantime, I can include several backlogged articles that have been squeezed out of recent issues by the recent catalog updates.

OFFICIAL ANNOUNCEMENT OF FORUM SUBSCRIPTION FEES

PSS Board of Governors

In accordance with the referendum which passed last summer, the Board is announcing the fees for mail delivery of a paper copy of *The Precancel Forum*, for the fiscal year September 1, 2010 through August 31, 2011. The annual dues for the year will be \$15.00, and will include an electronic version of *The Forum* emailed every month to each member who provides an email address. Life members receive this same benefit. Any member, other than a Sustaining Member, who desires a paper copy of *The Forum* mailed to them, must pay a subscription fee in addition to the dues, according to the following schedule:

Domestic, 2nd Class rate (The traditional method):	\$12.00
Domestic, 1st Class:	\$22.00
Canada:	\$25.00
Overseas (Everyone other than the above):	\$35.00

THE PRECANCEL FORUM

(USPS #441-780) (ISSN #2073-5415)

Published Monthly by the

PRECANCEL STAMP SOCIETY, INC.

5999 Cunningham Ct., Florence MT 59833

Volume 71 – No. 4 April 2010 Whole No. 844

Subscription to members \$11.00 plus membership dues of \$9.00

Non-Members \$20.00 per year Single copies \$1.50

**Periodicals Postage Paid at Missoula, MT
and additional offices**

**POSTMASTER: Send address changes to
Precancel Forum, c/o James Hirstein, P.O. Box 4072
Missoula, MT 59806-4072**

BOARD OF GOVERNORS:

Chairman, Phil Cayford, Box 497, Dublin, NH 03444-0497

npcayford@myfairpoint.net

Gene Byers, 2209 Jessamine, Bloomington, IL 61704-1521 ehbyers.bloom.il@gmail.com

Dick Laetsch, 3 Shady Creek Lane, Scarborough, ME 04074-9723 precancel@aol.com

James Uline, 1981 Hoch Road, Prospect, OH 43342-9779 uline2@adelphia.net

OFFICERS

President, Duane Spidle, 6140 Coyote Lane, Peyton, CO 80831-8300
duaneandsue@elpasotel.net

Vice-President, T. G. Rehkop, P.O. Box 1013, Fenton, MO 63026-1013
tgrehkop@marz.com

Secretary, James Hirstein, P.O. Box 4072, Missoula, MT 59806-4072,
jhirstein@msn.com

Treasurer, Ralph Kimball, P.O. Box 763, Boulder Creek, CA 95006-0763,
ralph@ralphkimball.com

Editor-Business Manager Forum, Larry Patterson, P.O. Box 3442, Cary, NC
27519-3442, larryofjtrack@bellsouth.net

Promotional Secretary, Jerry Hejduk, P.O. Box 490450, Leesburg, FL 34749-0450
psspromise@comcast.net

APS Representative, Arnold Selengut, 1109 N. Riverhills Dr., Temple Terrace, FL
33617-4243

Specifications Chairman, James Wehle, P.O. Box 7972, St. Petersburg, FL
33734-7972

Historian, James R. Callis, Jr., 621 N. St. Asaph St., #404, Alexandria, VA 22314-1929

The Precancel Stamp Society holds an Annual Convention during July or August. Local branches hold meetings several times each year. See the 'Calendar of Events' for dates and locations.

Sustaining members are those who pay \$50.00 or more in dues each year, to support the Society. If they wish, these members will receive a paper copy of *The Forum* mailed First Class at no additional charge.

Comments about Electronic Delivery of *The Forum*

The Forum, like many other publications, is making the transition to the digital age, and, even in our case, there is no turning back. Over the past year, Mike Hynes has experimented with several forms of electronic distribution, and, in our humble opinions, we have settled on a scheme that works great. Thanks to Mike, each month, *The Forum* will arrive in your email inbox ready to read.

Remember that you get the new advantages for a grand total of \$15.00 per year; this is a \$5.00 REDUCTION from the current year's dues. Here is what you get for your \$15.00:

A full year of PSS membership, September 1 to August 31

An electronic, PDF, copy of *The Forum* delivered instantly to your email doorstep. No more waiting for the postman!

Amazing, HIGH DEFINITION COLOR images throughout *The Forum*
Ability to print your copy in color. Put a staple through your print-out and it looks like an improved copy of the old version!

Access to EVERY print and "read" electronic version of all issues published since January 2007

A library of 40 *Forums* that expands every month.

All you need is an email account and the Adobe Reader software, which is free from www.adobe.com. Rest assured that Mike, Larry, Ralph Kimball, and others will help you with your computer so you can enjoy the new Forum.

Ralph Kimball

I still get the paper copy and plan to continue with that. I believe we are correct in offering the option to receive *The Forum* mailed in an envelope at the First Class rate. I have been using that option for the past couple of years because the USPS was regularly shredding my copy that was mailed at the Second Class rate. Thanks for everyone's work on this.

T.G. Rehkop

Adobe Reader includes easy-to-use features that allow readers to rotate tables that are printed “sideways.” In addition, for those of us who are visually challenged, we can increase or decrease the size of the printed material.

Larry Patterson

BACKGROUND FOR ARTICLE ON JAMESTOWN

Larry Patterson, PSS 5007

Bill Cummings wrote a series of articles about “precancels” from Barber, North Carolina. The articles appeared on pages 102 through 108 of the April 2005 issue (Whole Number 784) of *The Precancel Forum*.

Jamestown, in southwest Guilford County, is located between Greensboro and High Point. Barber, approximately 40 miles southwest of Jamestown, is in Rowan County, between Salisbury and Statesville. Although neither Barber nor Jamestown are located on current configurations of I-85 or U.S. 70, both are close enough to the latter to have been on it before towns were bypassed as main highways were realigned to accommodate unhindered, speedy travel. The current edition of the *PSS Town and Type Catalog* lists a Type 841 for Barber and a Type 748 for Jamestown. (Additional sources: *The North Carolina Gazetteer*, William S. Powell, 1968, and a North Carolina Department of Transportation road map.

JAMESTOWN, N. C. (PART 2)

By William Cummings, PSS 124-3484

See Barber (Part 1) in the April 2005 issue of *The Forum* for details that also apply to the Jamestowns. With a population of 137, Jamestown was much bigger than Barber.

After receiving a large number of Jamestowns early in 2010, I realized that I am fighting against a strong tide. I have rearranged the plates by type fonts and the dates of the issues. Items that exist se-tenant will be kept together.

When these were used in relation to the Barbers is not known. While both appear on the 1917 issue, the Barber 13¢ may have been an import while the

Jamestown 3¢ may have been in stock. The last stamp from Barber is the 2¢ Lexington Concord from April 1925. Four of the stamps from Jamestown were issued after that and as late as August 1927. Obviously the Jamestowns were still being printed several years after the Barbers.

Plate 1



Old type 2? (Note bottom 13¢ stamp.)
 Known on (14mm between lines):
 Offset: 3?, 3inv
 1922: ½, 1½?, 2?, 4?, 5 inv, 7?, 11, 13, 14, 17, 20down?, 25
 1923: 1½, 3, 4
 White Plains: 2, 2up
 Liberty Bell: 2up, 2down
 Lindberg Air

Narrow 13mm spacing between lines
 1922: 7
 White Plains up
 The Liberty Bell seems to be the easiest stamp to acquire.

The above strip shows an interesting item. Many of the Plate 1s show a light impression of the printing, but in reverse. It would seem that wet sheets were placed face down on other sheets, transferring an impression. On this strip the transferred impression is virtually as clear as the normal impression. See Appendix-Covers.

.....
 • The well has run dry! With this issue the
 • black log of articles has been published. So if
 • you were waiting to write another one until
 • you saw your last one(s) in print, now is the
 • time to submit a new one. And for all of you
 • who have never written something for *The*
 • *Forum*, this is your opportunity to start.
 •
 •

Plate 2



Old fake 3?

I have placed this here because of the type face. Obviously it is hard to determine any date from one stamp. Caps & lower case. Lines 15mm apart.

Known on: 1922: 7?

Plate 3

Old fake 7? Lines 13mm apart.

Known on:

1922: ½, ½inv, 1, 1½, 1½inv?, 3up, 4, 6?, 7, 9, 9inv, 11, 13, 17up?, 20, 20down

Liberty Bell: 2, 2up, 2down

Note that the transfers referred to in Plate 1 occur here also.



Plate 4



Old fake 7? Lines 13mm apart.

Known on:

1922: ½, ½inv, 1, 1½, 1½inv?, 3up, 4, 6?, 7, 9, 9inv, 11, 13, 17up?, 20, 20down

Liberty Bell: 2, 2up, 2down

Note that the transfers referred to in Plate 1 occur here also.

Plate 5

Old type 5? Lines 17½mm apart, city with comma 19+mm, wide "N".

Known on:

1922: 1?, 1½?, 2?, 9inv

Lexington-Concord: 2down

See Plate 4 for combination pair.



Plate 6



Old type 8? Lines 17½mm apart, city with comma 20mm Different type face than plate 5. Note especially the narrower "N".

Known on:

1922: ½, 1?, 1½inv?

CORRECTION FOR IOWA!

The Iowa total count in Official Update Number 2 contained a typo. The correct total is 1821 instead of 1817.

PSS SELLERS ON EBAY

Frank Bird prestamps	Dick Laetsch precancel44uw
Dennis Ewert ewertsde	Ron Doctor foghorn2000
Dave Fordham dgfordham	Dale Malzahn wyandotte2
Mike Gutman msg94	Mike Molle red-rose789
Reynold Hilzinger Reinholdstamps	Larry Patterson burocounter
Matt Stephenson mattstef	

Plate 7



Old type 9? *Lines 16mm apart, city 21mm*
 Known on:
 1922: ½?, 2?, 13inv?
 1923: 1, 1½inv
 The 13inv may be what is now Plate 8.

Plate 8



Old type? *Lines are 15½+mm between and city is 19mm with comma.* The “S” and “T” look different than plate 7. These may be part of a larger plate. On these, the 13¢ has low periods after the state while they are properly lined up on the 5¢.

Known on: 1922: 5inv, 13inv

Plate 9

Old type? *The city is 22mm long and has no comma.* Since a stamp is only 21½mm wide, this may have been intended for a commemorative, or for vertical application

Known on: 1922:2up



Plate 10



Old type 6? *Lines only 13mm apart*
 Known on: 1922: ½?, 1½?, 7?
 Liberty Bell: 2down

Plate 11

These next few plates seem to have been made for use on the large commemoratives such as the Liberty Bell and Saratoga. The spacing on plate 11 looks like it was made for definitives.



Old type 10?

Note narrower spacing on N. C. I assume that this is just a type setting variety on this plate. At least we know the position.

Known on: Saratoga 2

Plate 12



Old type 4?
Known on:
Liberty Bell: 2up, 2dn
See plate 13 for combination pair.

Plate 13



Old type2?
Known on:
Liberty Bell: 2 up

In combination with plate 12.



Plate 14



Old type 13?
Known on: 1922: 9?, 11, 13, 17 up

Fake 15 (Left)

One of the Voorhies group of fakes.



It is bad enough what one faces in Jamestown. It is too bad that this individual added to the mess fifty years later.

I do not know if this was intended to be a Bureau, or not. This particular group included silents and a City Type Coil.

TIPPECANOE AND A NEW TYPE TOO?

John Lane, PSS 6544

Here's an attractive overprint from Tippecanoe, Ohio. It's not listed. It's also not mentioned in the Hoover Ohio State Catalog. It doesn't look like the typical post cancels that could be mistaken for precancels. Can anyone shed any light on this one?



Editor: Again, I referenced Cunningham's "Encyclopedia of Fakes." Bill's research shows that this is a "Provisional, at best. (It is) known on: (the following) Presidential (series denominations) ½¢, 1¢, 1½¢, 2¢, 4½¢, 5¢, 6¢, 8¢, 9¢, 10¢, 11¢, 12¢, 13¢, 15¢, and 25¢ as well as the 1¢ Defense, 1¢ War, and the 40¢ Liberty."

NEW STATE EDITOR FOR PENNSYLVANIA

Arnold Selengut, PSS 194-4385

The Catalog Committee is pleased to announce that the position of State Editor for Pennsylvania, open since the resignation of Art Damm, will be assumed by Bruce Johnson, effective immediately."

SECRETARY'S REPORT FOR FEBRUARY 2010

March 1, 2010

MEMBERSHIP BOOSTERS

Michael Hynes-12; Dick Laetsch-7; the secretary-3; Jerry Hejduk-2; Rick Podwell and Arnold Selengut-1 each.

NEW MEMBERS

8024 Jim Perdue, 459 Vescovo Dr., Memphis, TN 38117
8025 Richard A. Mather, 1485 Ammon St. NW, Salem, OR 97304
8026 David Sanny, 26 Springhouse Lane, Elwyn, PA 19063

REINSTATEMENTS

6271 Curtis Gidding, 109-B W. Tomaras Ave., Savoy, IL 61874
5655 Robert G. Lanphear, 4510 Middleton Pk. Cir. East, Jacksonville, FL 32224

APPLICATIONS PENDING

Ronald Schram, William C. Blanford, and Bruce Carpenter.

APPLICATIONS FOR MEMBERSHIP

Jim Roy Warden II, 21 Barbara Cir., Little Rock, AR 72204
Proposed by: Michael Hynes
Lenore K. Gray, 1164 Haslett Rd., Williamston, MI 48895
Proposed by: Michael Hynes
Marvin J. Talso, P.O. Box 350, Redwood Valley, CA 95470
Proposed by: Phil Cayford

122

Bruce Lenorovitz, 2333 W. 241 St., #37, Lomita, CA 90717
Proposed by: Phil Cayford
W. Fred Teale, 1219 Forest St., St. Simons Island, GA 31522
Proposed by: Michael Hynes

DECEASED

67-2207 Joseph Laura, Jr., West Wareham, MA (October 14, 2009)
A PSS member since July 1943.
6670 C. Holden Bachner, Gloversville, NY (November 11, 2009)
A PSS member since July 1992.
6787 Joseph V. Dooley, Hurst, TX (date unknown)
A PSS member since May 1993.

ADDRESS CHANGES

237-4386 Roy C. Ware, 328 Wickley Way, Woodstock, GA 30188
6904 Clare Johnson, 1650 W. Glendale Ave., Apt. 4294, Phoenix, AZ 85021
7365 Harold Falls, 3005 Via Roma Ct., Plant City, FL 33566

TOTAL PSS MEMBERSHIP March 1, 2010 - 699

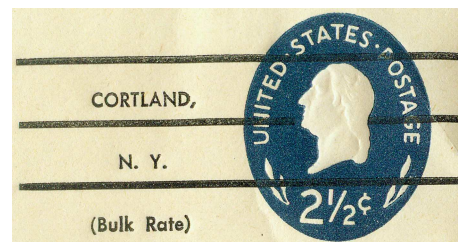
James Hirstein, Secretary

CORTLAND, N.Y.

New Listing on U542

Bill Lehr, PSS 6902

Cortland, N.Y. precancel on U542/UPSS 3482-46, type 3a8 2+ 30 46. Die 2+ and Bulk Rate are both previously unknown for Cortland. This is a UPSS size 23 (post office size 10), high back, with no gum, Die 178 on white paper envelope. The discovery copy shows the precancel applied at a slight angle. No company corner card is present. Cortland is the county seat of Cortland



County. Wickwire Brothers wire drawing mill, noted for its production of wire hardware cloth for use as window screens, Brockway Motor Company (owned by Mack Trucks) and S.U.N.Y. at Cortland are among the possible users of this precancel.

123

For the U.S. Specialist the

UNITED STATES SPECIALIST

A publication for the U.S. collector who wishes to "Know His Country's Stamps."

The U.S. SPECIALIST, recognized as the best in the field of national philatelic literature.

Send \$2.00 for sample copy and prospectus to:

**Executive Secretary, United States Stamp Society
P.O. Box 6634, Katy, TX 77491-6634**

**PRECANCEL FORUM
BACK ISSUES**

1970 - 1995

50¢ to members
75¢ to non-members,
at the following rates:

1 copy, 63¢
2-6 copies, \$1.89
7-12 copies, \$1.96
13-24 copies, \$2.81

YEARBOOKS (1940-1951)

\$1 each. Postpaid

PROGRAMS (1950 - 1991)
for postage.

Include cost of postage with payment made to "PSS."

**Jerry Hejduk
P. O. Box 490450
Leesburg, FL 34749-0450
psspromosec@comcast.net**

**PRECANCELS & PERFINs ON
APPROVAL**

*Fast, responsive service
Low, fair prices
Friendly help
with all questions*

If you are looking for Buros, Town and Type by State, general precancels or perfin, drop me a line. Visit my Internet site at www.precanceledstamps.com

**DICK LAETSCH
3 Shady Creek Lane
Scarborough, ME 04074
precancel@aol.com**

841

**PRECANCEL
COLLECTIONS
AND APPROVALS**

Write for our price list

Town and Type approvals from all states starting at 15 cents each.

We also have Commemoratives, Black Hardings, Classics, Bicents, etc.

**Dale Malzahn
Wyandotte Stamps
P.O. Box 567**

CLUB SCENE

Since publishing the last issue of *The Forum*, I have received the Illini Precancel Club's January-March 2010 newsletter. The stamp on the envelope had a nice circular cancellation from Cherry, Illinois. Of course, USPS had to ruin it with a five-bar spray-on from Bloomington. Why the cancellation from Cherry? The newsletter contained a three-page article about the St. Paul Coal Company's mine operations in Putman, LaSalle, Bureau, Grundy, Marshall, and Stark counties and the 100th anniversary of a disastrous mine fire in the Cherry mine. (For us beginning collectors, I thought that Illini President, Carl Moore, and newsletter editor, Tom Sanford, might ensure that we know that "Bureaus" are not Locals from Bureau County, Illinois. However, they left us to struggle with that bit of misinformation on our own. Ah well, perhaps there will be a clarification in the future.)

Tom Sanford did mention that he has spent 20 years looking through boxes of Wisconsin post cards at local stamp shows and flea markets to find post cards mailed with Local precancels. So far he has found 15, most of which were advertising cards. Tom suggests that post cards mailed with precanceled Locals could be an interesting direction in which to expand your collection.

APS SUMMER SEMINARS

T.G. Rehkop, PSS 227-5536

The American Philatelic Summer Seminar is unique in the hobby, offering instruction in specific philatelic areas through a combination of lectures and hands-on workshops. In its 31st year, many students return year after year, to learn more about the hobby and for the social benefits. This year the Summer Seminar is June 20-25, 2010.

Hosted at the American Philatelic Center in Bellefonte, Pennsylvania, the 2010 Summer Seminar begins with a Sunday evening reception. The remainder of the seminar week, Monday-Thursday, features 4½ hours daily of class time, PLUS afternoon elective workshops, a student auction and two dinners. You'll finish off the week on Friday at a breakfast session with the staff of the American Philatelic Center, and one last opportunity to use the library, sales division, expertizing reference library, and other resources at the Center.

GUNESCH LOOSE-LEAF ALBUM PAGES

No. 36—Type or Town collection. Each page has an attractive border with 36 neatly laid out squares. Printed frame on top of page for title. No other printing. Printed on 70-lb. stock. Punched to fit any standard 3-ring binder. Pages size 8 ½ x 11 \$13.00 per 100, postpaid. **Sold in lots of 100 only.**

Steve & Marlene Gunesch

2852 Sunset Ridge Court, Deltona, FL 32725-2131
(386) 532-8166 **email:smgunesch@gmail.com** 844

SEARCHABLE PRECANCEL CATALOGS ON CD FOR MICROSOFT WINDOWS PCS

The **Town and Type CD** exactly matches the current 7th edition printed *Town and Type Catalog* released January 2007 with 42,351 entries. All standard types and all local L-types are illustrated. Thousands of price changes have been introduced since the old 6th edition. Compare all the types from a town on a single screen. Keep track of your inventory just by double clicking an entry. Make your own albums in a variety of formats!

The **Bureau CD** exactly matches the current 5th edition printed Bureau Catalog released June 2005 with 9,556 entries. All Bureau cancels fully illustrated. Keep track of your inventory and make your own albums, just like the Town and Type CD.

The **Handstamp Dated CD** contains 11,500 handstamp dated types. This is the only comprehensive reference for handstamp dated types, as there is no corresponding printed catalog. More than 90% of the handstamps are illustrated in full color. Chenkin, Dye, Kansas Club and other types are included. Keep track of your inventory and make your own albums. This CD requires prior installation of the Town and Type CD.

See inside of back cover to order CDs from PSS Catalogs.

Computer technical support for all CDs provided by Ralph Kimball.
email: ralph@ralphkimball.com.
Handstamp dated questions answered by Gene Byers.
email: ehbyers.bloom.il@gmail.com.

Courses feature in-class discussions, question-and-answer opportunities, and informal, hands-on workshops. For the ultimate learning experience, each class is limited to 15–20 students.

One of the classes this year is **Collecting Precancels**, *led by me and assisted by Gary Hendren.*

Learn the history and background of precancels and identify U.S. bureau and local precancels including classics, electrotypes, printed dateds, handstamp dateds, and silent precancels. Computer programs will be reviewed and demonstrated for U.S. bureau, local, printed dateds, and handstamp dateds to help identify your precancels, provide a checklist of needed precancels, and print album pages. Different ways of collecting will be discussed so you can find the “right” way for you. We will also look at foreign precancels and use the *Catalog of Canada Precancels* and the *Catalog of Foreign Precancels*. A major portion of the course will be spent sorting and identifying precancels. Precancels will be provided, but you are invited to bring your own precancels to identify. For those purchasing a precancel computer program, bring a laptop and we will assist with the installation.

For additional information or to register, contact the American Philatelic Center via mail at 100 Match Factory Place, Bellefonte, PA 16823; phone at (814) 933-3803 or on the web at www.stamps.org.

RECRUIT AND MENTOR A NEW MEMBER!

Larry Patterson, PSS 5007
Editor, *The Precancel Forum*

The following Editorial is based on my observation of the apparent status quo. Some of you may remember that I used the title above as a space-filler in last month’s issue. I used it in response to the following email that I received from Bob Lanphear. At the time Bob sent the email, he had applied for reinstatement to PSS. From information in the current Secretary’s Report, he has met the time requirement and has regained membership.

Not only in PSS and *The Forum*, but throughout most philatelic organizations and periodicals, there are ongoing lamentations that membership is declining and that “we,” those currently in the hobby, need to recruit new members. However, once we recruit them, it seems that we are unable to keep them. A

case in point is the report in last month's issue about the number of former members who opted to not pay their dues and retain membership in PSS. As noted at that time and in a similar article last year, most of those who dropped their membership had joined within the past ten years or so.

Membership is as low as it's been in many years. Why can't we keep the members that we have? Are we trying to recruit from the diminishing ranks of all stamp collectors? In general, precancels are less expensive than many other philatelic specialties, but are they more complex than a novice anticipated? Do we, as individuals, need to send "new member" packets with some freebie stamps that we would toss in a penny box if we had one?

Several years ago, I joined the Mailer's Postmark Permit Club. (PSS member Scott Schulis edits their newsletter.) I joined, not because I wanted to expand my collection of mailer's postmark permits (MPP's), but because I'd learned the group produced a catalog. I just wanted to use it to learn about the MPP's that I'd accumulated over the past 40 years or so. Anyway, after my name appeared in the newsletter as an applicant, I received correspondence from several club members. Some just welcomed me; some included a "bonus" item; some included several items as well as an informational sheet or advertisement which listed the services that member offered.

Do we need to have more informational sessions at our, or any, stamp meeting? (The four-day seminar that T.G. Rehkop and Gary Hendren will present at APS this summer will last longer than many of our local, two-day shows.) Is the knowledge of the hard-core members that attend local shows and the annual convention far beyond that which could be presented in a short session?

How do I define hard-core members? About 100 people registered at the recent Florida meeting. There will be about 150 registered at the annual convention. Granted, a large number of those who went to Florida will also go to the convention. I regret to say that I have only attended one other local meeting, the Capital Precancel Club Roundup. There are probably 5 or 6 collectors at that meeting who do not attend either the Florida meeting or the convention. So I will assume that the other local shows attract about the same number of people who are unable to attend one of the other meets. If I consider hard-core members to be those who attend a precancel meeting, either in the U.S. or abroad, plus those who used to attend but are no longer physically able to do, I will guesstimate the number of hard-core members to be about 200.

This month's Secretary's Report gives a total of 699 members in PSS. How do we keep the 499 who are not hard-core interested and active in the hobby? Mentoring, one-on-one, may be one answer. From Bob's email, we do not seem to be doing a good job of mentoring at this time. Given, the unusually heavy storms that we experienced this past winter probably delayed delivery of second-class mail and the Secretary's Report that contained Bob's request to be reinstated. Other than that, I will guess that current members' failure to contact Bob is not particularly unique.

Admittedly I had more contact with Bob than I do with a typical member applicant. Therefore, I can't hold myself up as an outstanding example of someone who welcomes applicants. As long as I have more *Forums* than I need to mail to current members, I send member applicants, listed in the Secretary's Report, a copy of the current issue. I include an eight-page "Precancel Primer." The "Primer" is printed on 2 sheets of 8.5- x 11-inch paper and contains some definitions, examples, and illustrations of precancel terms that have been explained over the past couple of years in the "Inquiring Minds" series. Hopefully, this information will help someone who is brand new to precancels. In Bob's case, I also included a personal note because he lives in the same retirement community in which my parents lived for about fifteen years.

"Hi Larry,

I'm starting to feel psychotic – nearly all of the PSS management is against me. Seriously, I am only emailing you because of all the PSS officers with an email address; you are the only one courteous enough to respond. Thirty years ago when I joined the APS, they were falling over backwards in efforts to flood me with information. Currently, I continue to be a recruiter for the ICC (Isthmian Collectors Club) and each time I receive prospective member information, I contact him/her immediately, sending him all pertinent material. After a new member joins, the new member is provided with back copies of the Journal, auction procedures, advertising guides, etc. Additionally, as the current Editor of the newsletter for The Stamp Collectors Club of Jacksonville, FL, we proceed similarly. As you know, new members are difficult to attract. "The graying of the hobby" etc.

Basically, I am somewhat baffled as to the lack of any acknowledgement by the PSS (except for yourself) as to my application, or

even that I have an interest in the PSS. If I am correct in my surmise, I would not be surprised to learn that the PSS is losing members, but more importantly, not replenishing that loss with new members. I hope I am wrong.

I do plan on attending the Orlando meeting, and I plan on making my presence known. (Don't worry, I don't own a gun). Actually, I plan on updating all of my PSS literature and also purchasing a copy of the Bureau Album.

Oh yes, I HAVE NOT RECEIVED A COPY OF THE FEB. *FORUM* YET.

Thanks for running interference for me Larry. I look forward to meeting you in Orlando."

(from a subsequent email)

"This past Wednesday, Feb. 10th, I attended the PSS Meeting in Orlando. What a pleasant experience, not only for me but for my wife, the "tolerator." In fact, Jerry Hejduk took time away from his table to show my wife the location of the coffee pots and waiting area, therefore freeing me up for the more "important stuff." Everyone I spoke with was helpful and went out of their way to engage me and make me feel welcome. The whole experience was wonderful. I will be relating my positive observations at the next meeting of the Jacksonville Stamp Collectors Club.

Additionally, I spoke with Larry Patterson and several other PSS members concerning my membership and the non-receipt of *The Forum*. None of the PSS members present could explain why I have not received the monthly copy of *The Forum* and at least an acknowledgment of receipt of my application and check, mailed to the Secretary Jan. 11th, 2010. Obviously, I would have preferred to email Mr. Hirstein, but no email address is listed on the website.

This is the only cloud that hovers over an otherwise wonderful experience with the PSS. Therefore, I respectfully request that you

make inquiries regarding my membership progress and more importantly, the reason I have not received *The Forum*.

Thank you,
Bob Lanphear"

Editor: In an email about a week after the Florida meeting and three weeks after it had been mailed, Bob notified me that he had received the February issue of *The Forum*.

SOMETHING TO CONSIDER

GET SCHEDULED IN THE "CALENDAR OF EVENTS"

Recently I learned that one of our precancel dealers planned to attend a non-precancel show as a precancel dealer. I learned of his plans too late to post information about the meet in the "Calendar of Events."

I will be more than happy to include such information in future "Calendars," as long as I am informed in sufficient time to get the date in front of members prior to the event. This is free advertising for the dealer. And the presence of a precancel dealer may well encourage people to attend who would not do so otherwise. I try to work with a deadline of the 15th of the month prior to the month of issue. For example, get some information, an article, or a question to me by April 15th for inclusion in the May issue.

GET PUBLISHED IN *THE FORUM*

Do you have a question about precancels? Don't feel like you're the only one. Other members probably have the same question. So the answer to your question will probably be a piece of knowledge that other members will appreciate learning.

Are you concerned that the precancels in your collection that are not identified in *The Town and Type Catalog* seem to always be included in Bill Cummings' *Encyclopedia of Fakes*? One reason that Bill has compiled the information in his *Encyclopedia* is to make it available to

collectors. If you have an unidentified item in your collection, chances are that quite a few other people have the same or a similar item and would like to know what it is or where it fits. Heck, some people even have extensive collections of one or more fakes and their variations.

Please send me your question. A nice scan is always appreciated because other collectors can compare their item with your published picture.

If the item happens to be included in the Cummings *Encyclopedia*, so be it. And when I mention that in my response, I'm not trying to pull an, "I gotcha!" (Or as my sons used to say, "You are Boom! Boom! Busted!") I'm just trying to help spread the news. After all, the only stupid question is the one not asked.

**IT'S TIME TO START
COLLECTING PERFINS**

An inexpensive
philatelic experience

Club sales of
Stamps and Covers

Website for U.S. & foreign
Perfin publications

Bi-monthly magazine
Sample copy available from

Membership & Publicity Chair
The Perfins Club
P.O. Box 490450
Leesburg, FL 34749-450
flprepers@comcast.net

■ ■ **CORRECTED AD** ■ ■

FOR SALE

T&T collection of
D.C., DE, MD, VA, WV
that is 94% complete.

Contains a total of 2598
mounted stamps
which have
a catalog value of \$3959

Normal Kerbel
10209 Green Forest Dr.
Silver Spring MD 20903
(301) 434-6664

843

By the same token, if you have some precancel information you would like to share, I will be glad to include it in the next issue that has "space available." Right now, there is plenty of available space in the April issue. So why not take a few moments to write, or type, something and send it to *The Forum*?

WARNING: BRIDGE CLOSED!

Phil Cayford, Box 497, Dublin, NH 03444

For those of you who are planning to drive to the PSS Convention in Burlington, VT, this summer, I need to warn you that the only bridge over Lake Champlain, at Crown Point, NY, has been demolished for safety reasons. This fact may not be apparent on various maps (electronic or otherwise). A free ferry service has been implemented at Crown Point to help with the traffic load. There are currently four other ferry services across the lake, one small one at Ticonderoga and three larger ones north of Crown Point. Hopefully this will be enough to alleviate the summer traffic load. Plan accordingly!

NEW LOCAL BAR PRECANCEL?

Stu Hanlein, PSS 118-4186

I found this in a precancel mix I purchased at Knoppex this year. Is this a new U.S. local precancel bar? There are 5, 1.0 mm lines 2.5 mm apart. I only have the enclosed scrap of paper from the envelope. There was no corner card. Have you seen any other provisional use like this?

Editor: A year or so ago, after making an incorrect assumption that were no "modern" silent precancels, I purchased Dave Smith's "Silent Precancels, a



Catalog of Lines, Bars, and Designs." I have very few silents and purchased the catalog to use as a reference in situations like this. I am in no way an expert with this catalog. However, one way to look for an impression is by Issue. Six towns, Tucson, AZ;

South Windsor, CT; Baltimore, MD; Detroit, MI; Carlsbad, NM; and Greensboro, NC, used Silent precancels on the Americana Issue. The examples Dave showed or described all used one or two lines. None used the five vertical lines shown here. However, I did notice that five vertical lines were used on several issues over 100 years ago.

INQUIRING MINDS

CORRECTION

Larry, a couple of items to mention to you: The correct name is Gilbert NOBLE, as in “regal” and not NOBEL, as in the inventor of dynamite. You have made that mistake several times.

Also, ALL editions of the *Bureau Precancel Catalog* HAVE used Scott numbers. George Klein and I co-edited that first edition and I paid Scott out of my own pocket for the right to use their numbers.

Dilmond Postlewait, PSS 184-3544

WHAT ARE UNIVERSAL NUMBERS?

Before the advent of PSS Types or Styles, Gilbert Noble’s system of Universal Numbers was used to differentiate precancel devices. You may find reference to “U” numbers in older catalogs and literature. However, unless you are using an older catalog or literature for research, you will probably not need to be concerned with that former method of differentiation.

The Precancel Information Page web site has two charts in which Universal Numbers are compared to PSS Style Numbers. One chart lists the various issues which were covered by a range of “U” numbers. The second chart is an attempt to convert specific Universal Numbers to PSS Style Numbers. Unfortunately, a nice one-to-one match in either direction is not possible. The PSS numbering system added many new styles. In addition, the PSS Style Chart tends to be more specific (distinguishes two or more styles for some Universal Styles).

I AM CONFUSED BY SEEMINGLY TWO DIFFERENT USES OF “LOCAL” DEVICES.

In general, there are three broad classifications of precancel devices: The Bureaus were printed at the Bureau (hence the name) of Engraving and Printing in Washington, D.C. for use in various cities. A post office had to order a minimum of 250,000 coil or 500,000 sheet stamps of one denomination in order to have them printed by the Bureau. The Bureau devices are assigned PSS Styles 31 through 87.

The U.S. Post Office Department and later the U.S. Postal Service, herein after referred to as USPS, recognized that many post offices could take advantage of the savings provided by precancels but could not use the minimum number required for the stamps to be precanceled at the Bureau of Engraving and Printing. To meet this need, USPS contracted with a private company to make precancel devices. [I think Bumgartner (spelling?) in the Washington, D.C. area was the company that frequently won the contract.] During the period of time that a contract was in effect, the various devices were highly standardized. For example, the font, distance between the parallel lines, punctuation, and the need for three lines for longer city and state names, as well as other distinguishing characteristics, are identical from one device to another. A post office ordered a device through the USPS; the contractor made the de-

Precancels Wanted

If you’re giving up precancel collecting or have inherited a collection that you are not interested in, I’m interested in buying entire collections and accumulations of precancels.

I will travel to inspect your holdings if they require that.

Please contact me if its time to sell.

Phil Cayford

Box 497

Dublin NH 03444

npcayford@myfairpoint.net 844

If You Need Help learning to use the PSS Town and Type Catalog

Using a Town ad Type Catalog to Start a Precancel Stamp Collection

was designed for you!

\$9.00 plus postage

\$1.39 to U.S.

\$1.81 to Canada

\$3.76 to all other countries

Larry Patterson, P.O. Box 3442,
Cary, NC 27519-3442, USA

vice. Then, when the individual post office received the device, the precancels were to be applied *locally* at the specific post office whose town and state names were on the device. These contracted devices have PSS numbers 101 through 906.

At times and for various reasons, an individual post office needed a precancel device and ordered one from a *local* company instead of going through USPS. After the device was received, it was supposed to be applied locally in the town whose town and state names were on the device. These devices are identified with either an "L," or, in a few cases a, "G," and are listed after the contract devices for the town that used them. There is no common characteristic between the L-1 of one town and the L-1 of any other town. Some of these locally-produced devices, however, were designed to resemble a Bureau or contracted device. Further, since some of these local companies produced a device for more than one post office, there are similarities in devices. However, PSS makes no attempt to identify the similarities in the numbering of Local devices from one town to another.

HOW DO I DETERMINE THAT AN IMPRINT IS READABLE WITH THE UNAIDED EYE?

This statement almost seems like an oxymoron. However, we may have

become so used to interpreting town and state names based on their lengths, or a combination of letters, or a desire to have one with a high catalog value, that we just *want* the impression to be a certain one. Here is a good test of legibility. Ask a tolerator who has no vested interest in the outcome to read the impression. If the tolerator can, the names are legible. If the tolerator can not; the names are illegible.

DISPLAY ADVERTISING RATE CARD			
Page	1 Mo	6 Mo	12 Mo
Full	\$60	288	480
Half	43	210	348
Quarter	23	108	180
Eighth	15	72	120
Inch	10	48	84

Insertions must be consecutive to earn discount rate. Copy may change monthly. **REMITTANCE PAYABLE TO PSS. DEADLINE** is 1st of month preceding date of issue. Free copy furnished to DISPLAY advertiser. Mail your ad with payment or email ad with payment to follow via USPS to Editor, PO Box 3442, Cary, NC 27519-3442 or larryofjtrack@bellsouth.net. Ad will run through the issue whole number in bottom right corner of ad.

WANTED!

YOUR AD, ARTICLE, OR ILLUSTRATION TO FILL THIS SPACE AND THE MISSING PAGES!

CALENDAR OF EVENTS
Provide detailed information as soon as possible so those who need to do so may make travel arrangements.

April 11, 2010 Golden Gate Precancel Society at the Sacramento Philatelic Society's Easter Seal Show

Sunday, 10:00 AM - 4:00PM. Easter Seal Rehabilitation Center on Hurley Way, Sacramento, CA.

April 16-17, 2010 New England Spring Meeting

Hampton Inn, Danbury, CT. 81 Newtown Rd. (I-84, Exit 7). Phone (203) 748-6677 for reservations.

April 21-23, 2010 Golden Gate Precancel Society Spring Round-up

Best Western Colony Inn, Atascadero, CA. Call the hotel (805) 466-4449 for reservations.

April 29 - May 1, 2010 Illini Club Spring Meeting

Hawthorn Suites in Bloomington, Illinois. Contact Gene Byers for more information.

Capital Precancel Club Roundup June 4-5, 2010

Friday, 9AM - 11PM, Saturday 9AM - 4PM. Hilton Garden Inn Fairfax, 3950 Fair Ridge Drive, Fairfax, VA. Reservations: (703) 385-7774; Rooms \$169 Thursday, \$75 Friday and Saturday. Make reservations by May 13. Mention "Capital Precancel Club" to get this rate. Show info: (703) 824-8189 or Bernie@m47303.com

June 11 and 12, 2010 Missouri Mulefest

Maryland Heights Community Center, 2344 McKelvey Road, Maryland Heights, MO 63043. Setup will start at 8:00 a.m. on Friday the 11th. The hours will be 9:00 a.m. until 10:00 p.m. on Friday, 8:00 a.m. until 3:00 p.m. on Saturday. For more information, contact Gary Hendren by telephone at 314-576-5261 or email g2hslm@msn.com.

August 3 - August 7, 2010 PSS Annual Convention

Early bird starts August 2 at the

Sheraton Burlington, 870 Williston Road, Burlington, Vermont 05403. Call 866-716-8120 or 802-865-6600 by July 1, 2010 to reserve a single or double room at \$109.00 plus tax.

September 23 - 25, 2010 Illini Club Fall Meeting

Hawthorn Suites in Bloomington, Illinois. Contact Gene Byers for more information.

October 1-2, 2010 Texas Precancel Club Fall Meeting

Baymont Inn & Suites, 301 Capital St., Grapevine, TX 76051 (This is new location.) Friday 9am—10pm; Saturday 9am-5pm, with auction starting at 2pm.

November 12-13, 2010 P C Fest Midwest

Holiday Inn, Richmond, Indiana, 5501 National Road East (US 40), \$79.95/night (765) 966-7511 or (800) 548-2473. For more information Pete Heydt (812) 899-1696 or Howard Tumler (513) 874-4321

August 1 - August 6, 2011 PSS Annual Convention

Madison Marriott, 1313 John Q. Hammonds Dr., Middleton, Wisconsin 53562. Reserve rooms by July 13, 2011 to get the PSS rate. Phone 888-745-2032 or 608-831-1376.

CLASSIFIED RATES

1 issue: 6¢ per word
3 issues: 12¢ per word
6 issues: 24¢ per word

Advertise items “For Sale” or “Wanted” to over 700 members. Three- and six-issue ads must be consecutive. Mail your ad with payment or email ad with payment to follow via USPS. Ad will run through the issue whole number in bottom right corner of ad. DEADLINE: 1st of month preceding date of issue. Remittance payable to PSS: mail to:

**Editor, PO Box 3442
Cary, NC 27519-3442
or larryofjtrack@bellsouth.net**

CLASSIFIED ADS

WANTED TO BUY, SELL, OR TRADE: Printed or hand-stamped dateds from North Carolina. Send details of offerings to Larry Patterson, PO Box 3442, Cary, NC 27519-3442 larryofjtrack@bellsouth.net 849

WANTED - Apple Greens (SC 513) Perfins, Precancels and Perfinned Precancels; Florida Perfinned Precancels; and Kans. & Nebr. Overprints (SC 658-679) with Perfins. All to buy or trade. Your price, my approval. Jerry Hejduk, PO Box 490450, Leesburg, FL 34749-0450 flprepers@comcast.net 847

PSS CATALOGS		PSS Members	Non-members
Town & Type	Town & Type Catalog of the US & Territories, 7 th ed, January 2007	\$25.00	\$27.50
Town & Type Software	Town and Type computer program for Windows	\$39.00	\$39.00
Handstamp Dated CD	1st Edition Catalog features more than 11.500 types, requires T&T software	\$20.00	\$20.00
Bureau	Bureau Precancel Catalog, 5 th Edition, June 2005	\$15.00	\$16.50
Bureau Software	Computer program for windows	\$19.00	\$19.00
Double Line Electros	2009 Edition of denominations precanceled with DLE plates	\$15.00	\$16.50
Style Chart Album	Style Chart of Local Precancel devices in album page format. 2007	\$3.00	\$3.50
13 cent Apple Green	Catalog of 1917 13 cent Apple Greens, 2006 ed. by Mike Gutman	\$10.00	\$11.00
City Type Coils	Catalog of City Type Coils precancelled by coil machines, 2001 ed. by James Callis	\$7.00	\$8.00
Silent Precancels	Lines, Bars, and Designs on 19 th and 20 th century stamps, 2004 ed. by David Smith	\$25.00	\$27.50
Precanceled Envelopes	Precanceled Envelopes of the United States, 3 rd ed. 2003	\$20.00	\$22.00
Printed Dated Type Catalog	Lists the recognized printed dated controls with pricing for all types, 2004 ed.	\$25.00	\$27.50
International Precancel Catalog	Catalog of Foreign Precancels Except Canada, 2005, first ed. by John Randall	\$25.00	\$27.50

Prices effective 01/10 include U.S. domestic postage via Media Mail. Foreign orders ADD \$13.45 per catalog for postage. Payment due with order. Make check, drawn on a U.S. bank, or domestic or international money order payable to The Precancel Stamp Society.

Order from: PSS Catalogs, 3 Shady Creek Ln., Scarborough, ME 04074

BUREAU PRECANCELS

If you have needs in **BUREAU PRECANCELS**, then feel free to send along your **WANT LIST** or request our **APPROVAL BOOKS**. In either case your needs will be given our attention and you should be able to fill in many of your blank album spaces.

The **APPROVAL BOOKS** are mounted (100 stamps per book) in the same order as the PSS Bureau Precancel Catalog and the K&P Bureau Precancel Album. Thus it will not always be possible for us to send you just a single state. Your request may require an overlapping at the beginning and/or ending of the state. Sorry these mailings are restricted to U.S. addresses only unless you agree to assume airmail costs both ways.

Your **WANT LIST** can specify a limited amount, if your budget so dictates. Make such restrictions, if you so desire.

We also stock for immediate shipment
(postpaid in the U.S.):

K&P BUREAU PRECANCEL ALBUM -- \$50.00

PSS BUREAU PRECANCEL CATALOG

5th Edition, 2005 -- \$15.00

Matching Blank Pages for K&P ALBUM

50 for \$12.50

DILMOND D. POSTLEWAIT

P.O. BOX 1134

Wichita, KS 67201-1134

dpostie@infionline.net